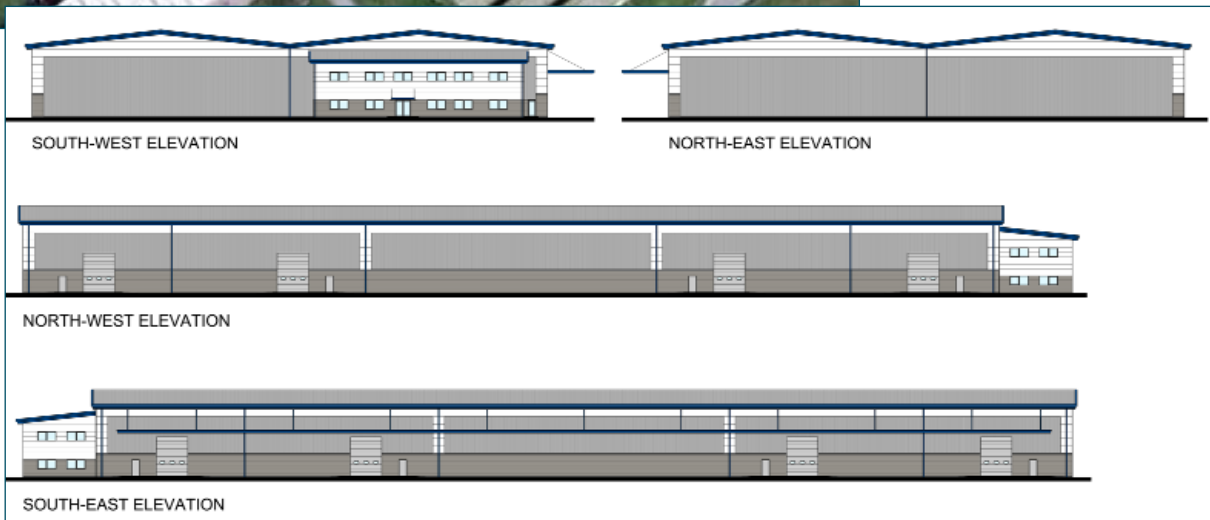


New Factory Facility for Prestoplan

Client: Redman Heenan Properties Limited

Role: Employer's Agent, Quantity Surveyor, CDM Co-ordinator



Description:

Redman Heenan Properties employed Wakemans as Employer's Agents, Quantity Surveyors and CDM Co-ordinators, on this £3.5m multi phased scheme to develop the former RAF Quedgeley complex and convert it into an Industrial/Business Park.

This initial phase of the project involved the construction of purpose built 94,000ft² manufacturing facility with attached two storey office building for Prestoplan.

The project proved especially challenging because of the existence of badger setts, the site was carefully managed to comply with requirements of English Nature and the Local Authority to avoid disturbance and maintain the badger environment.

Quedgeley West Business Park, Gloucester



Following the successful completion of phase one, Wakemans has been appointed on the next stage of development at Quedgeley West Business Park near Gloucester.

Developer St. Modwen Properties PLC appointed Wakemans as employer's agent, quantity surveyor and CDM Co-ordinator on the £5m scheme, which comprises of six industrial units in five separate blocks with a combined floor space of 119,546ft², plus integral office accommodation.

Before construction could begin a series of old Ministry of Defence buildings were demolished.

The industrial units and offices had phased completions between December 2007 and May 2008.