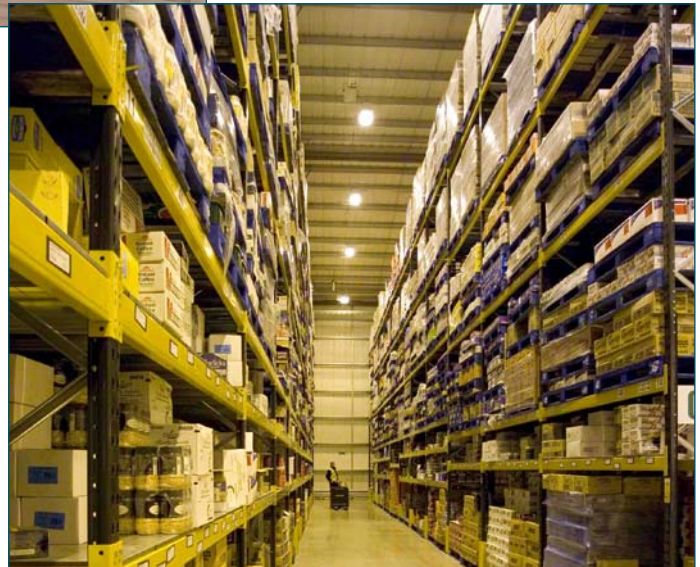


## Chilled Food Warehouse and Distribution Centres - UK Wide

*Client:* 3663

*Role:* Employer's Agent, Quantity Surveyors



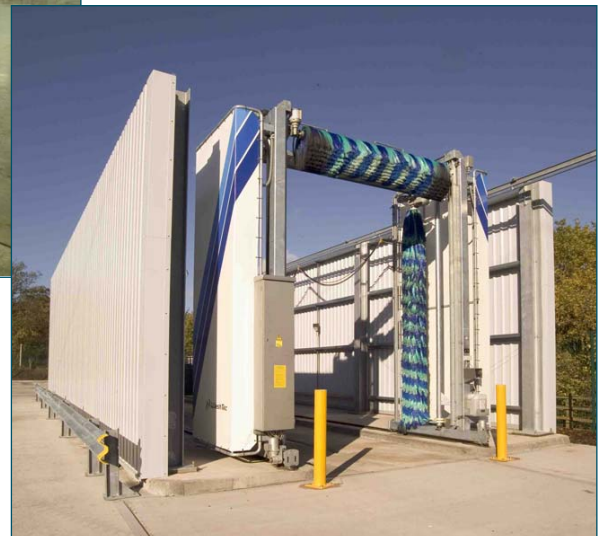
### *Description:*

Wakemans were retained by 3663 nationwide food distributors on a series of projects across the UK. The projects ranged in complexity from completely new developments to the extension and refit of existing warehouses. Recently completed projects include:

- New warehouse, @ccess26 Business Park, Nottingham
- New cold store, warehouse and offices 2,060m<sup>2</sup>, Stowmarket (£3.5m)
- New freezer, chill store and chill marshalling facility inside existing Warehouse, Gateshead (£900k)
- New warehouse, distribution centre and offices 5,622m<sup>2</sup>, Birmingham (£2.3m)
- New freezer, extension and chill marshalling facility inside the existing building 697m<sup>2</sup>, Lee Mill, Devon (£1.2m)
- Fit out developers shell warehouse, Larbert, Stirlingshire 3,036m<sup>2</sup> (£3.3m)

*cont. over*

## Chilled Food Warehouse and Distribution Centres - UK Wide



- Fit out to existing unit to create distribution centre, Fradley Park, Litchfield (£4.5m)
- New build depot Edinburgh (£8m)
- Enfield depot refurbishment and alterations (£250k)
- Extension to chill marshalling area, Battersea (£1.5m)
- Freezer replacement Manchester (£3m)

### *Significant Features:*

Before the warehouse facilities can become operational time is needed to bring the buildings cold store environmental conditions down to the correct working temperature. Therefore successful project programming is essential to avoid disruption to 3663 operations, this is especially important with the refit and extension of existing operational sites.